

Climate Change Adaptation, Mitigation Education Outreach to Hopi Nation Communities

Darrien Benally

B.S. Applied Indigenous Studies

Mentor Mansel Nelson Institute for Tribal Environmental Professionals



Hopi Nation

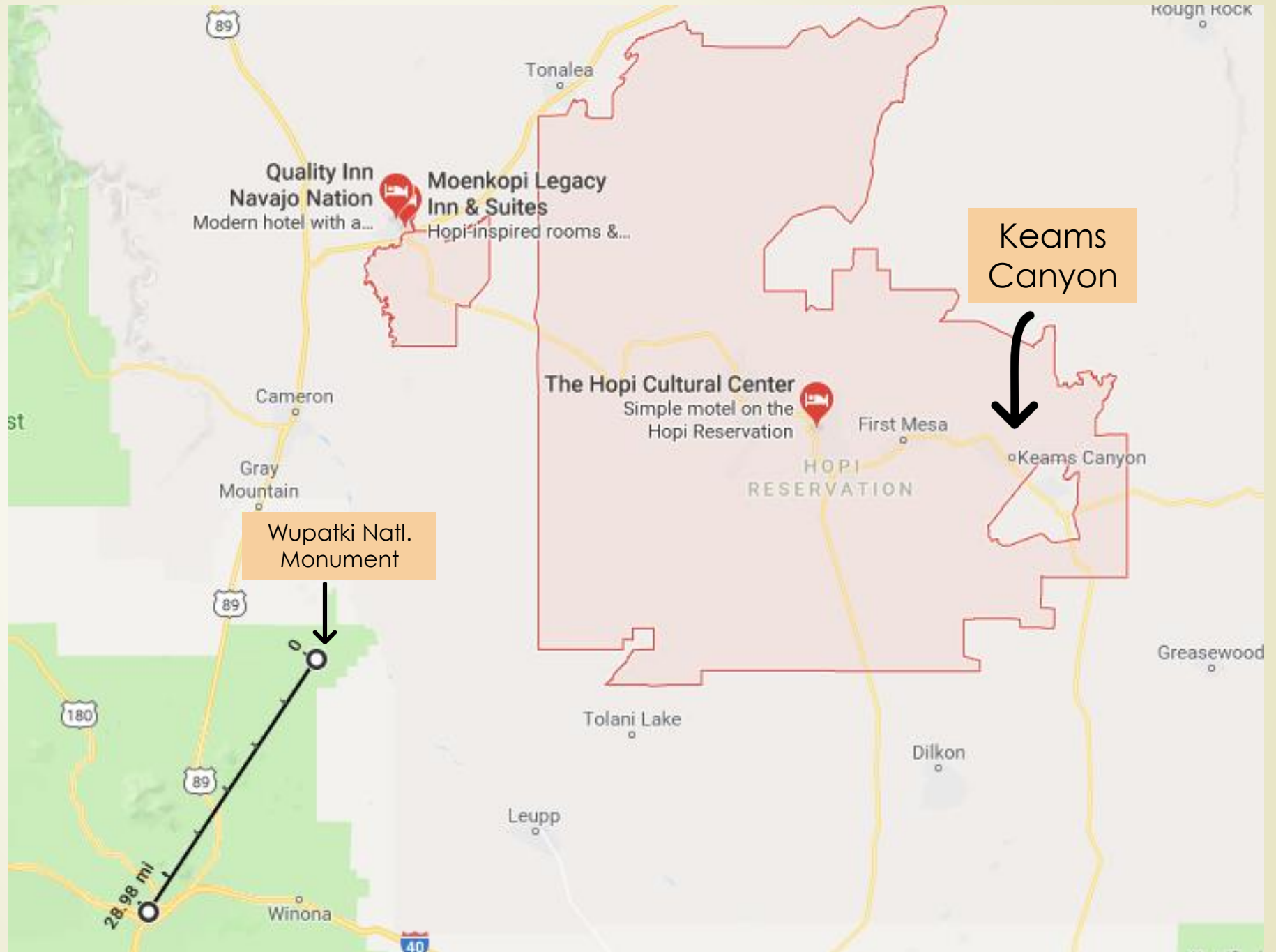


Fig. 1 Map of present day Hopi Nation

Wupatki National Monument



Fig. 3 East Facing Wall at Crack N' Rock Community

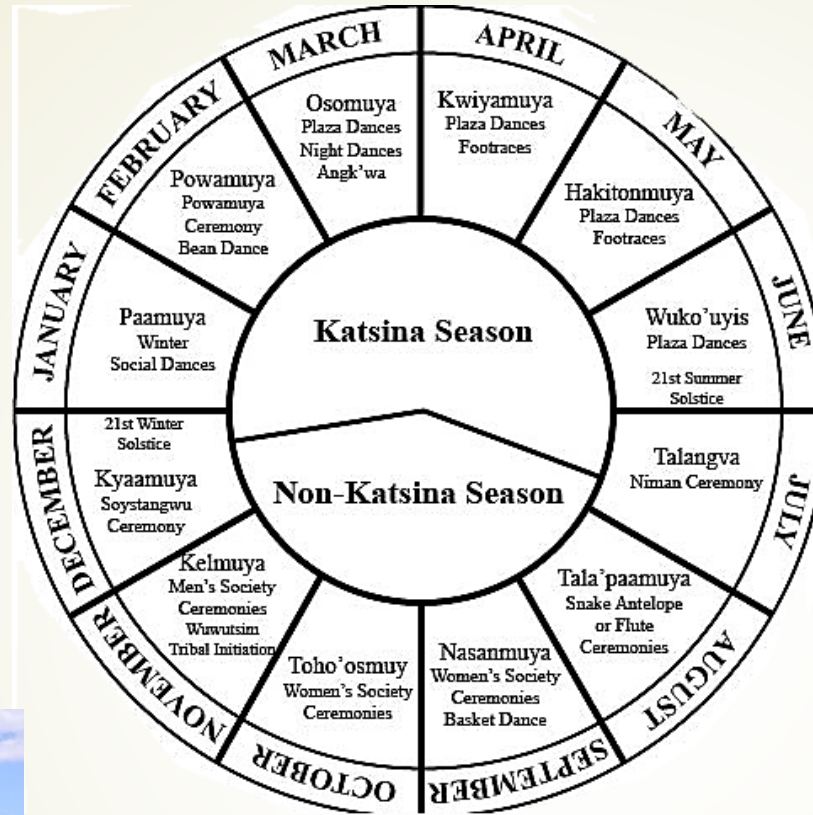


Fig. 2 Hopi Ceremonial Calendar

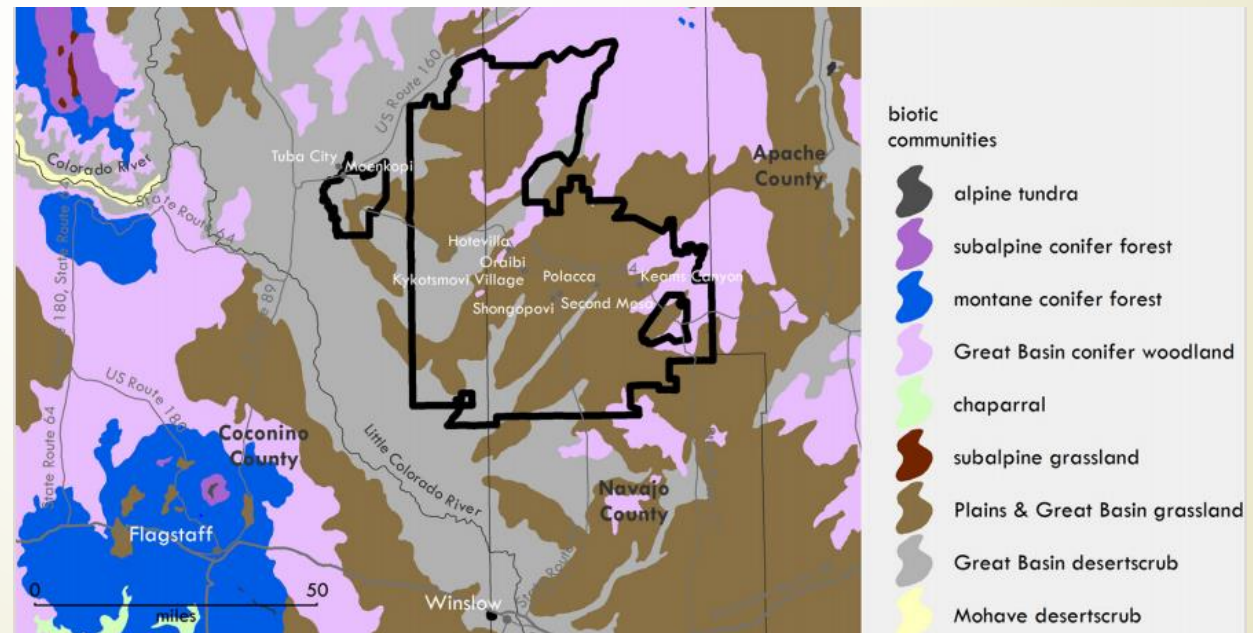
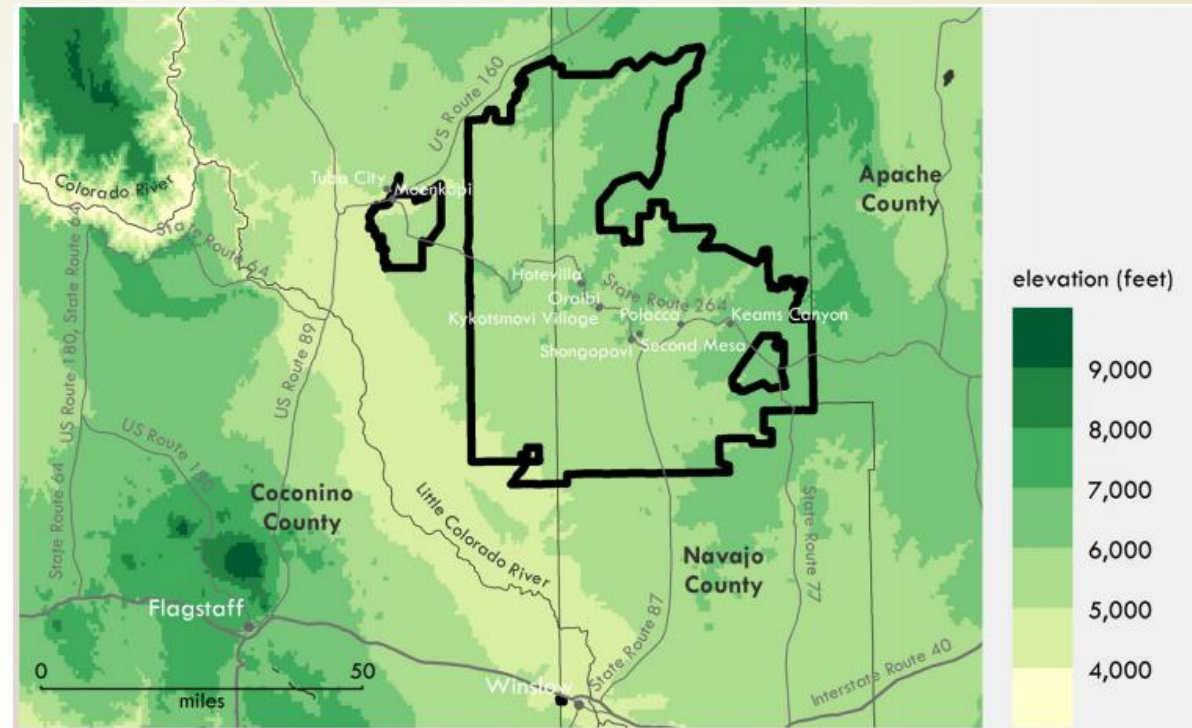
- 1,100 and 1,300 AD, pre-Colombian culture
- Members of the Anasazi People at Crack N' Rock community, an east sloping mesa
- This site is thought to be where the Katsina began for the present day Hopi people and Culture
- The site at Crack N' Rock community marks the Winter Solstice, the Water Clan then announces the Powamu Ceremony
- Dry farming agricultural practices
- How will climate change challenge these centuries old ceremonial practices?



Fig. 4 Wupatki National Monument

Present Day Hopi Nation and Culture

- Mixed Pinyon-Juniper grassland environment, arid conditions.
- Variability in precipitation amounts.
- Variability of temperature extremes.
- Drought conditions persist most of the year.
- Variability has been attributed to altitude changes across the nation.
- Reliance on dry farming
- Precipitation Evapotranspiration rates for Keams Canyon are at 52 inches per year. Keams canyon on average receives 11 inches of rain per year.

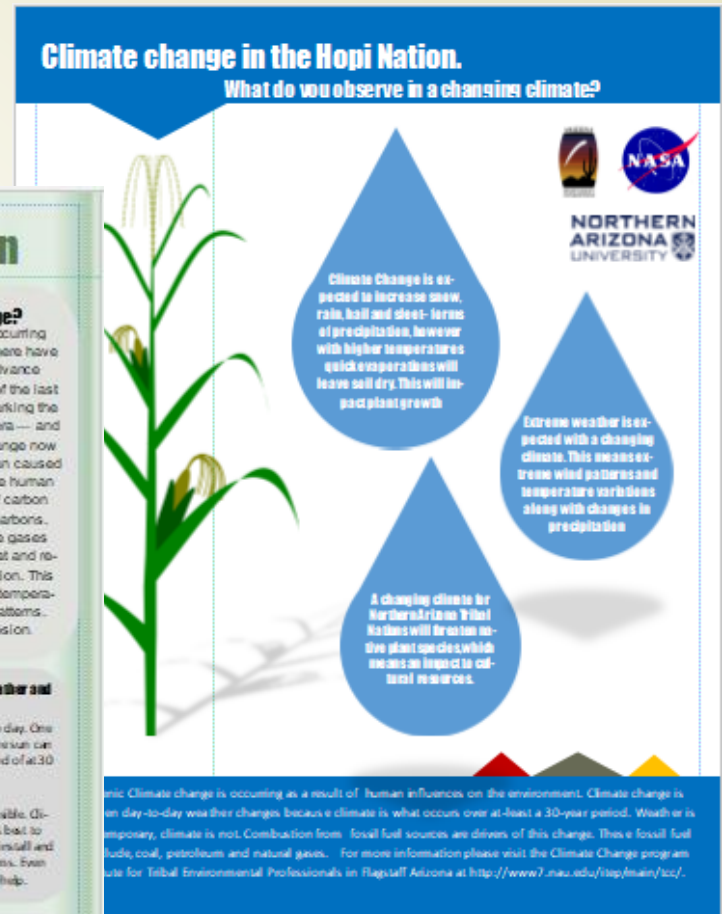
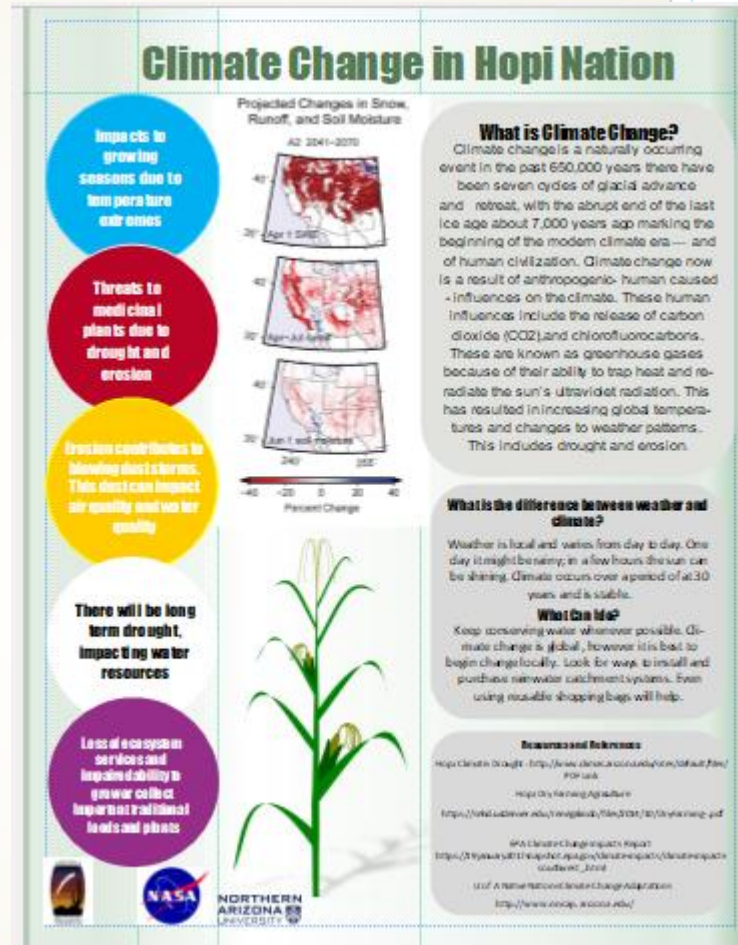


Dry Farming



Outcomes of the Project

- Create awareness of climate change adaptation and mitigation efforts within Hopi communities
- Fact sheets identifying potential impacts to the Hopi Nation
- Educational Outreach to Community Events : conservation games, climate education focused games, distribution of fact sheets
- Outreach to local schools



Educational outreach dispersed through out Hopi communities.



Outreach
to local
schools



Conclusions

- Outreach Conducted should use indigenous methodologies to connect community to resources
- Outreach to local schools will need to continue
- More community outreach events should be conducted
- More resource sheets need to be distributed to through out the community
- Long-term community planning for climate change adaptation and mitigation should be considered





Acknowledgements

- ▶ Mansel Nelson, Institute for Tribal Environmental Professionals
- ▶ NASA Space Grant Program
- ▶ Arizona Space Grant consortium
- ▶ Paula Lopez, Hopi Telecommunications Inc.
- ▶ Shawn Namoki Hopi Substance Abuse Prevention Project
- ▶ Bryan Bates, Emeritus Professor of Science, Coconino Community College
Naturalist: Lindblad Expeditions/ National Geographic; Grand Canyon Association Field Institute; Betchart Expeditions; Smithsonian Expeditions; Road Scholars